

Beginning Sounds

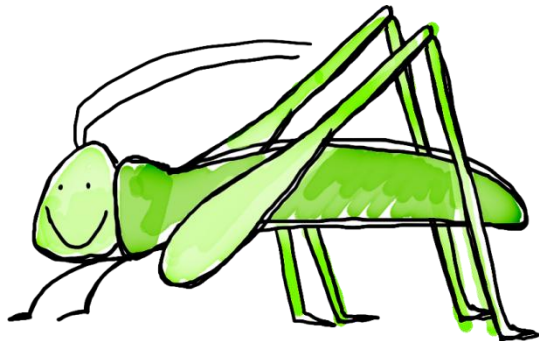
Directions: Place a clothespin on the letter whose sound you hear at the beginning of each picture. Check your answer on the back!



y

h

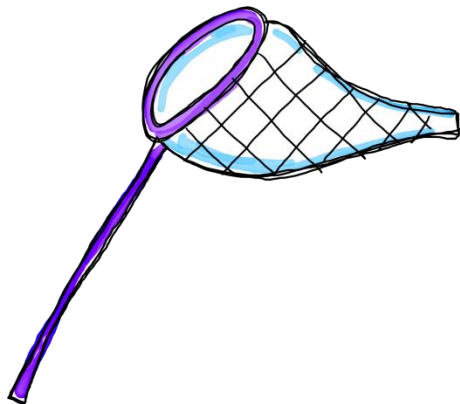
c



g

w

x



j

b

n



c

n

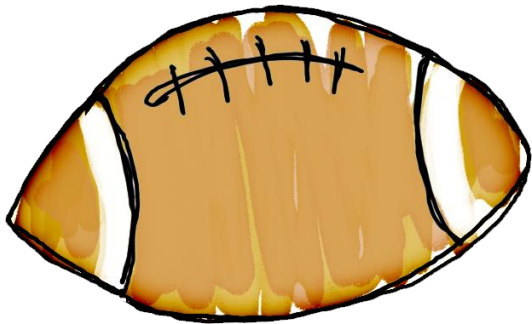
j



k

p

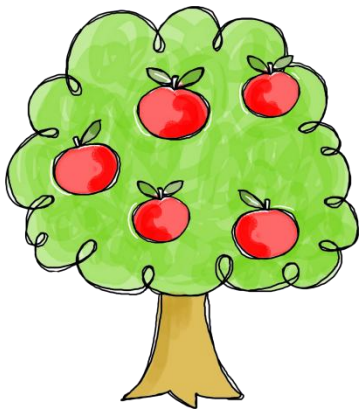
h



f

q

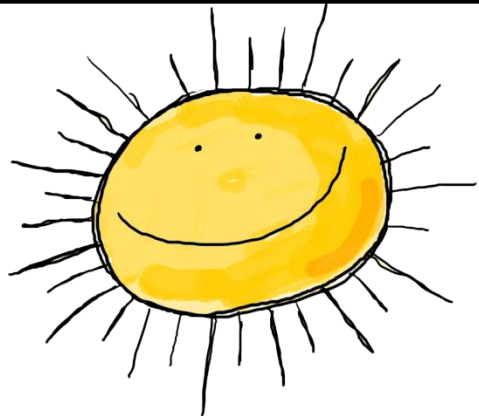
z



x

t

y



s

m

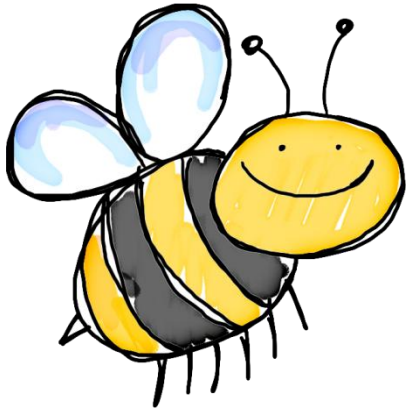
v



h

j

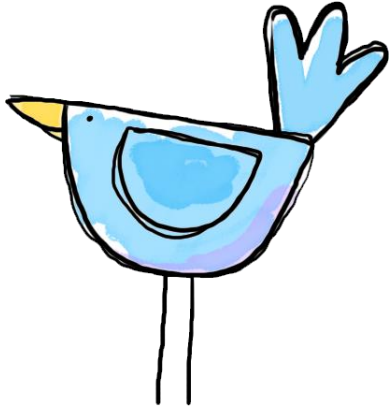
f



b

f

w



z

b

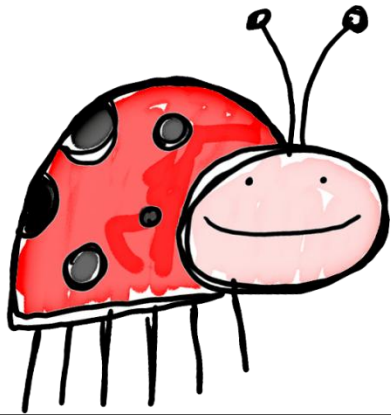
d



d

c

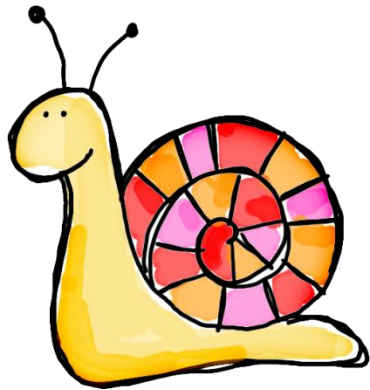
s



l

m

r



r

p

s



d

f

t